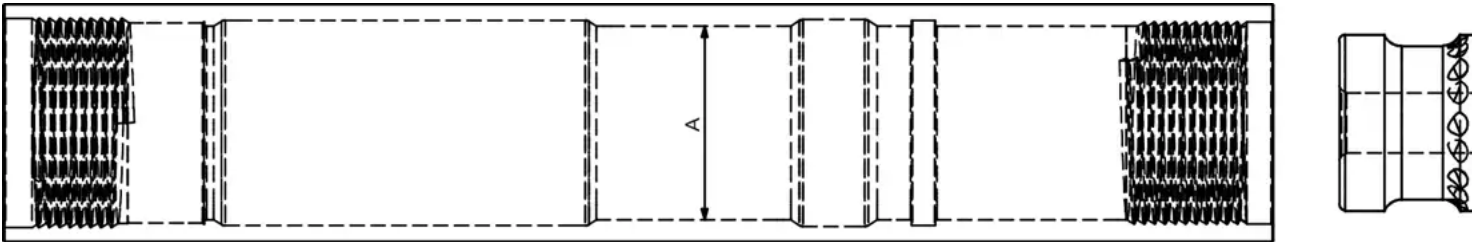


# G-Force Nova GFN8500 IR380 Shank

## Hammer Service Log

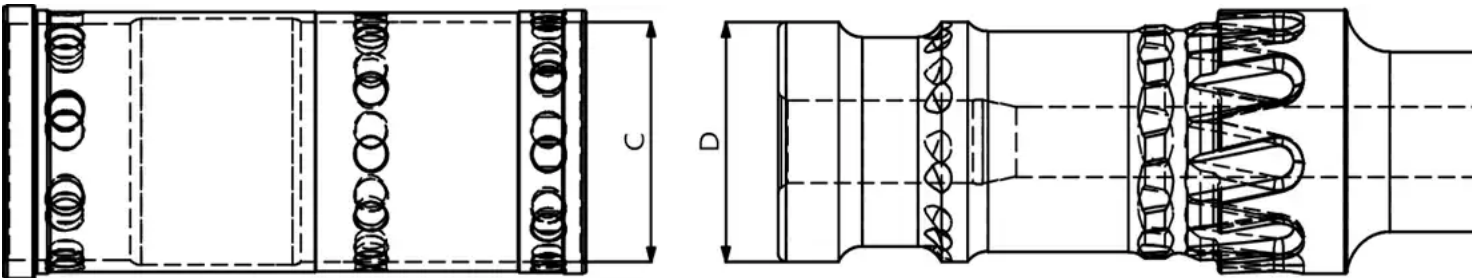
### Wear Sleeve / Piston Clearance

Part	New Dimension		Discard Clearance
Wear Sleeve	A	5.93"	greater than or equal to 0.010"
Piston OD	B	5.92"	



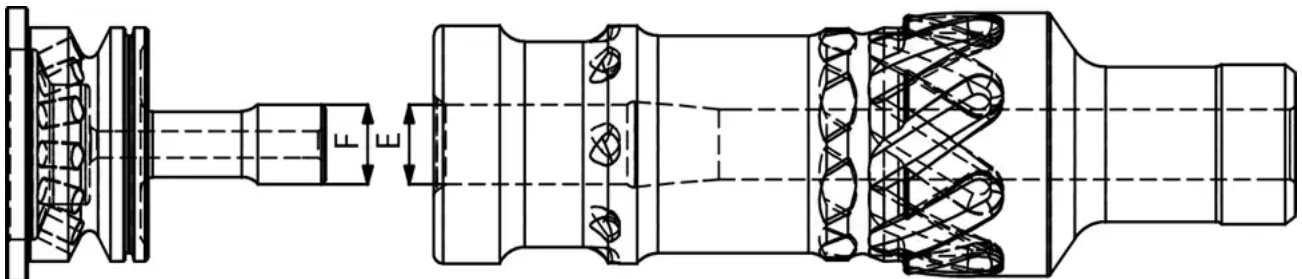
### Inner Cylinder / Piston Clearance

Part	New Dimension		Discard Clearance
Cylinder ID	C	5.39"	greater than or equal to 0.010"
Piston OD	D	5.38"	



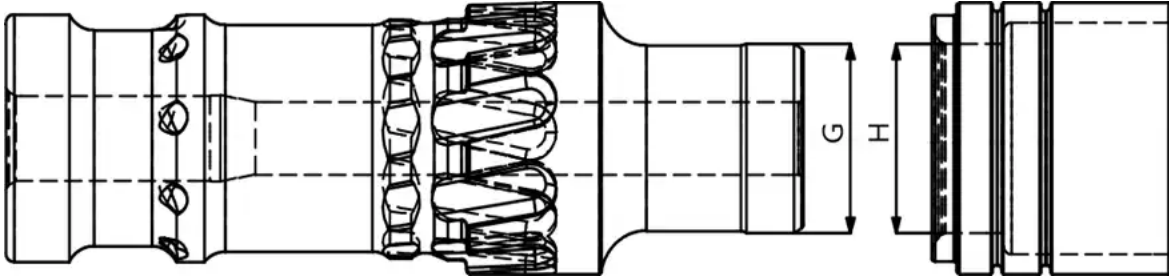
### Distributor Probe / Piston ID Clearance

Part	New Dimension		Discard Clearance
Distributor Probe OD	F	1.84"	greater than or equal to 0.010"
Piston ID	E	1.85"	



### Bearing - Piston OD Clearance

<b>Part</b>	<b>New Dimension</b>		<b>Discard Clearance</b>
<b>Bearing ID</b>	H	3.19"	greater than or equal to 0.010"
<b>Piston OD</b>	G	3.18"	



### External Wear

<b>Description</b>	<b>Wear Limit</b>
<b>Wear Sleeve Reverse Dimension</b>	6.93"
<b>Wear Sleeve Discard Dimension</b>	6.85"
NOTE: Chuck should be replaced when wear transfers to wear sleeve.	