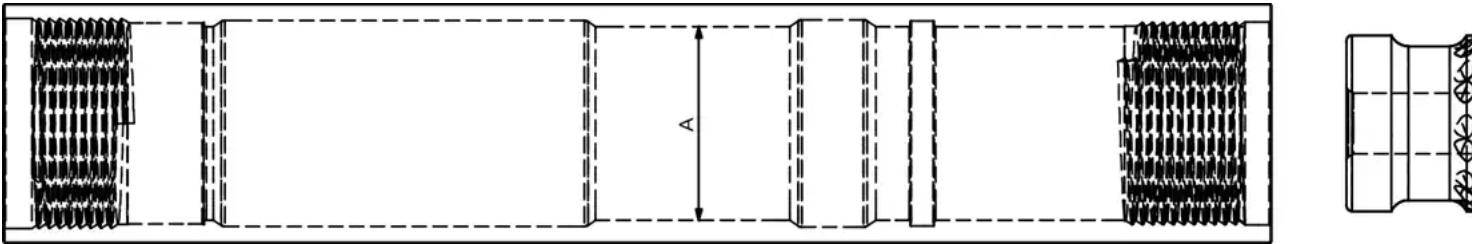


G-Force Nova GFNM8000 M80 Shank

Hammer Service Log

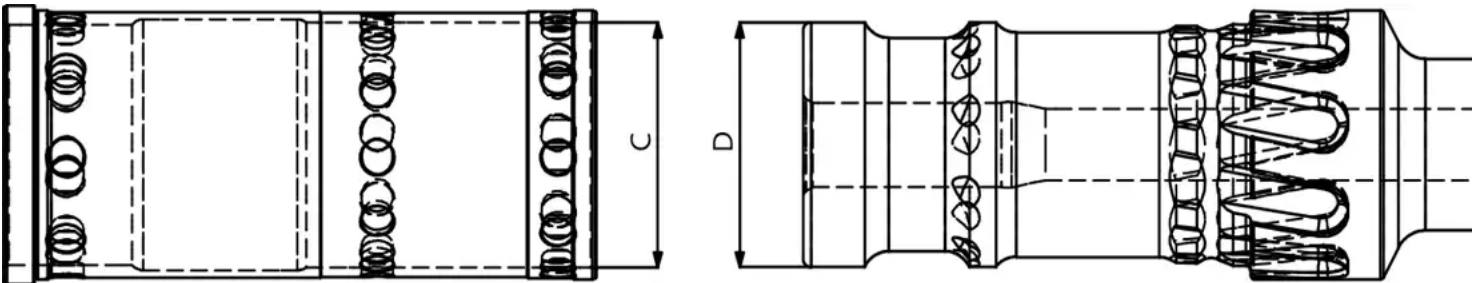
Wear Sleeve / Piston Clearance

| Part | New Dimension | | Discard Clearance |
|-------------|---------------|-------|---------------------------------|
| Wear Sleeve | A | 5.93" | greater than or equal to 0.010" |
| Piston OD | B | 5.92" | |



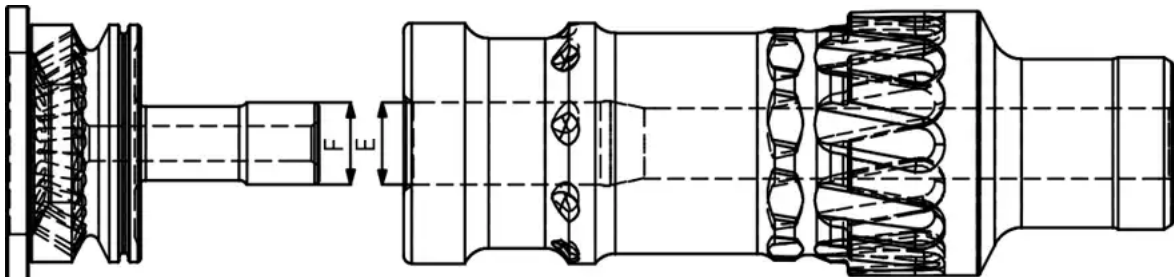
Inner Cylinder / Piston Clearance

| Part | New Dimension | | Discard Clearance |
|-------------|---------------|-------|---------------------------------|
| Cylinder ID | C | 5.39" | greater than or equal to 0.010" |
| Piston OD | D | 5.38" | |



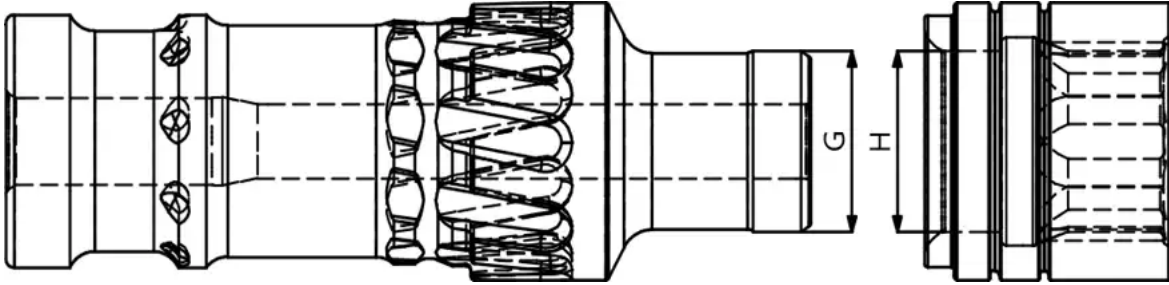
Distributor Probe / Piston ID Clearance

| Part | New Dimension | | Discard Clearance |
|----------------------|---------------|-------|---------------------------------|
| Distributor Probe OD | F | 1.84" | greater than or equal to 0.010" |
| Piston ID | E | 1.85" | |



Bearing - Piston OD Clearance

| Part | New Dimension | | Discard Clearance |
|------------|---------------|-------|---------------------------------|
| Bearing ID | H | 3.86" | greater than or equal to 0.010" |
| Piston OD | G | 3.85" | |



External Wear

| Description | Wear Limit |
|---|------------|
| Wear Sleeve Reverse Dimension | 6.93" |
| Wear Sleeve Discard Dimension | 6.85" |
| NOTE: Chuck should be replaced when wear transfers to wear sleeve. | |