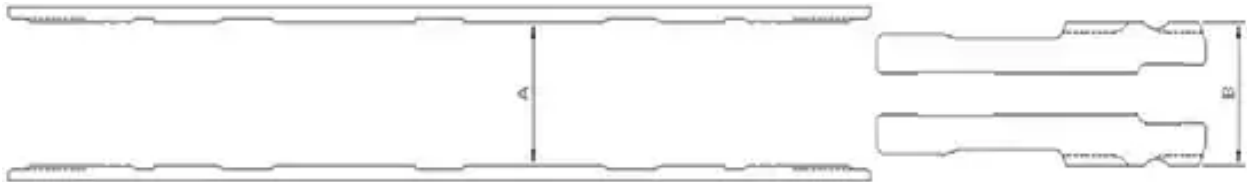


# G-Force GFM6000 SD6 Shank

## Hammer Service Log

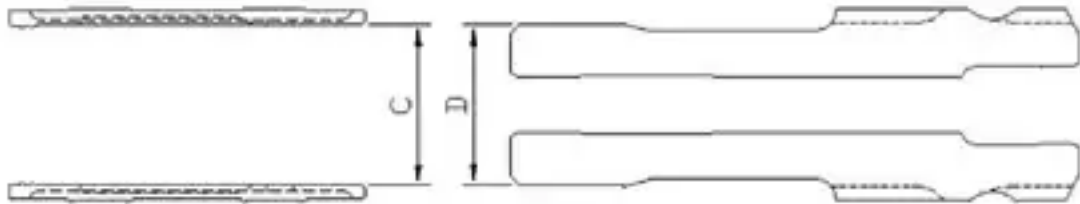
### Wear Sleeve / Piston Clearance

Part	New Dimension		Discard Clearance
Wear Sleeve	A	4.496"	greater than or equal to 0.010"
Piston OD	B	4.491"	



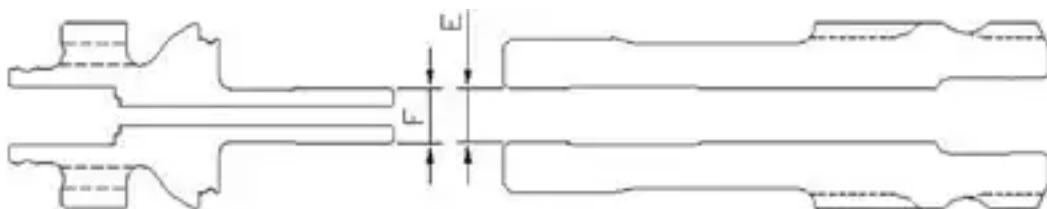
### Inner Cylinder / Piston Clearance

Part	New Dimension		Discard Clearance
Cylinder ID	C	3.75"	greater than or equal to 0.010"
Piston OD	D	3.745"	



### Distributor Probe / Piston ID Clearance

Part	New Dimension		Discard Clearance
Distributor Probe OD	F	1.328"	greater than or equal to 0.010"
Piston ID	E	1.336"	



## External Wear

Description	Wear Limit
<b>Wear Sleeve Reverse Dimension</b>	5.118"
<b>Wear Sleeve Discard Dimension</b>	4.96"

NOTE:

1. If no evidence of significant air pressure drop or if wear sleeve is wearing evenly on the top and bottom end, recommendation is to not reverse wear sleeve.
2. Chuck should be replaced when wear transfers to wear sleeve.