

# G-Force GFR4000 IR340 Shank

## Hammer Service Log

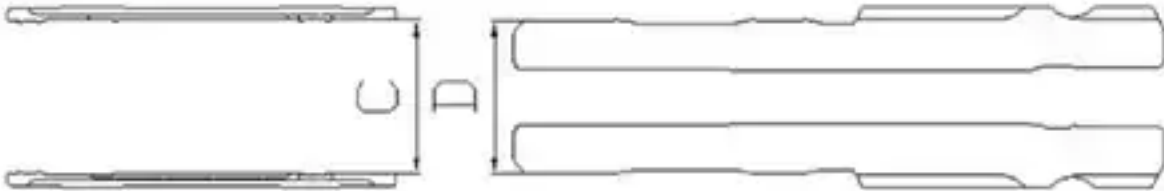
### Wear Sleeve / Piston Clearance

Part	New Dimension		Discard Clearance
Wear Sleeve	A	3.228"	greater than or equal to 0.010"
Piston OD	B	3.224"	



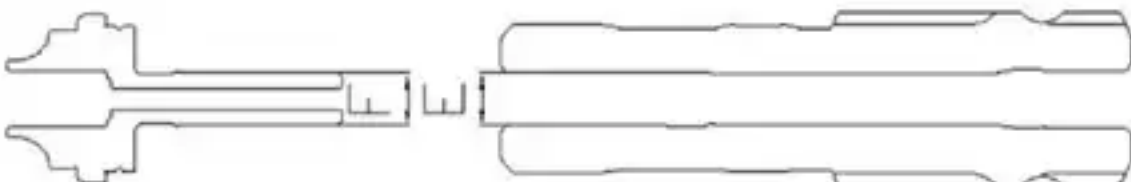
### Inner Cylinder / Piston Clearance

Part	New Dimension		Discard Clearance
Cylinder ID	C	2.756"	greater than or equal to 0.010"
Piston OD	D	2.752"	



### Distributor Probe / Piston ID Clearance

Part	New Dimension		Discard Clearance
Distributor Probe OD	F	0.978"	greater than or equal to 0.010"
Piston ID	E	0.984"	



## External Wear

Description	Wear Limit
Wear Sleeve Discard Dimension	3.425"
NOTE: Chuck should be replaced when wear transfers to wear sleeve.	