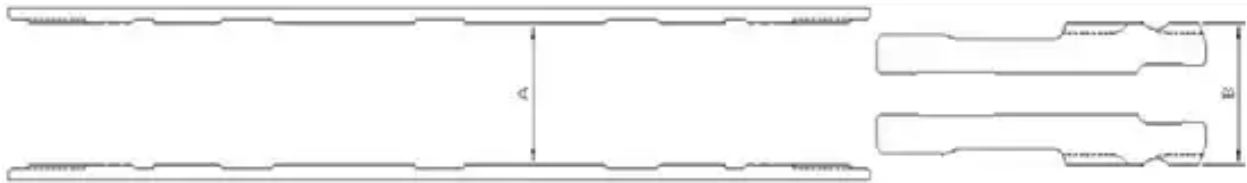


G-Force GFR6000 IR360 Shank

Hammer Service Log

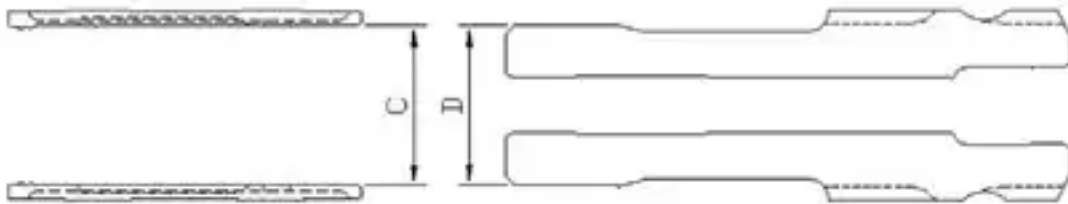
Wear Sleeve / Piston Clearance

| Part | New Dimension | | Discard Clearance |
|-------------|---------------|--------|---------------------------------|
| Wear Sleeve | A | 4.496" | greater than or equal to 0.010" |
| Piston OD | B | 4.491" | |



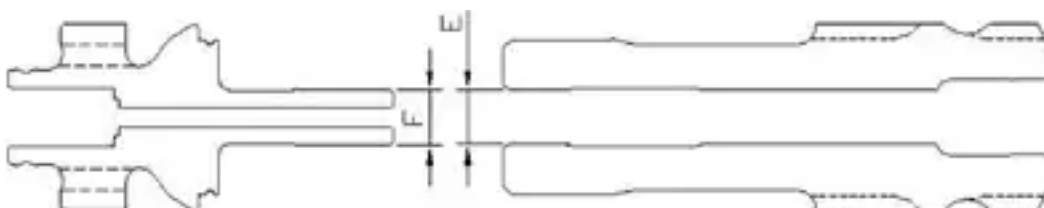
Inner Cylinder / Piston Clearance

| Part | New Dimension | | Discard Clearance |
|-------------|---------------|--------|---------------------------------|
| Cylinder ID | C | 3.75" | greater than or equal to 0.010" |
| Piston OD | D | 3.745" | |



Distributor Probe / Piston ID Clearance

| Part | New Dimension | | Discard Clearance |
|----------------------|---------------|--------|---------------------------------|
| Distributor Probe OD | F | 1.328" | greater than or equal to 0.010" |
| Piston ID | E | 1.336" | |



External Wear

| Description | Wear Limit |
|-------------------------------|------------|
| Wear Sleeve Reverse Dimension | 5.118" |
| Wear Sleeve Discard Dimension | 4.96" |

NOTE:

1. If no evidence of significant air pressure drop or if wear sleeve is wearing evenly on the top and bottom end, recommendation is to not reverse wear sleeve.
2. Chuck should be replaced when wear transfers to wear sleeve.