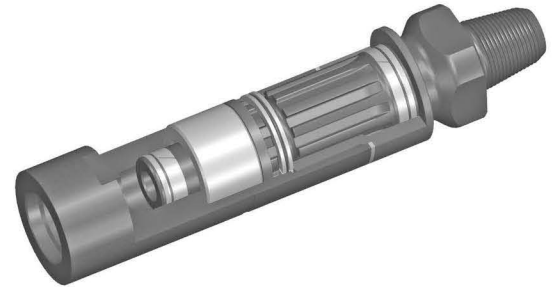


DTH Air/Water Shock Absorbers

These heavy duty shock subs range from 4” to 18” diameter with an innovative design for both Air & Water drilling applications.

They are a “must have” investment to help protect your drill string. These are built with the toughest steel from U.S. mills to withstand to the most extreme drilling conditions.



Key Features

- Sits easily and directly on top of the DTH hammer
- Increased rate of penetration
- Superior shock absorption
- Heavy duty internal components significantly helps to reduce wear
- Rig top drive protection through Hyper Absorption technology
- More drive splines for better torque handling and wear resistance
- Manufactured in USA

Parts List

No	Part Name	Qty	Part Number
1	Top Sub	1	
2	O-Ring Sealkit	1	
3	Top Connector	1	
4	Breakout Ring	1	
5	Retainer Ring	1	
6	Spacer	1	
7	Buffer	1	
8	Lower Connector	1	

Complete Shock Absorber

*Seal kit contains Buffer

3”

Technical Specifications

Thread Connection	2-3/8" API REG PIN/BOX
Tool Length (in / mm)	18.2 / 463
OD (in / mm)	3.35 / 85
Weight (lbs / Kg)	36 / 16.3
Max Torque (FT-lbs / M-Kg)	2890 / 400

Parts List

No	Part Name	Qty	Part Number
1	Top Sub	1	
2	O-Ring Sealkit	1	
3	Top Connector	1	
4	Breakout Ring	1	
5	Retainer Ring	1	
6	Spacer	1	
7	Buffer	1	
8	Lower Connector	1	

Complete Shock Absorber

*Seal kit contains Buffer

4”

Technical Specifications

Thread Connection	2-3/8" API REG PIN/BOX
Tool Length (in / mm)	18.2 / 462
OD (in / mm)	3.86 / 98
Weight (lbs / Kg)	51 / 112
Max Torque (FT-lbs / M-Kg)	2890 / 400

America West Drilling Supply 800.800.8444 775.355.1199
 1350 E Gendale Ave Sparks, NV 89431
sales@awds.com

Parts List

NO	Part Name	Qty	Part Number
1	Splined Pin Drive Shaft	1	
2	O-Ring Sealkit	1	
3	Top Nut	1	
4	Breakout Ring	1	
5	Retainer Ring	1	
6	Spacer	1	
7	Buffer	1	
8	Lower Sub Housing	1	

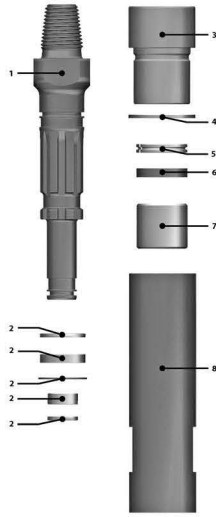
Complete Shock Absorber

*Seal kit contains Buffer

5"

Technical Specifications

Thread Connection	3 1/2" API REG PIN/BOX
Tool Length (in / mm)	19.4 / 493
OD (in / mm)	4.76 / 121
Weight (lbs / Kg)	77 / 169
Max Torque (FT-lbs / M-Kg)	2893 / 400



Parts List

NO	Part Name	Qty	Part Number
1	Splined Pin Drive Shaft	1	
2	O-Ring Sealkit	1	
3	Top Nut	1	
4	Breakout Ring	1	
5	Retainer Ring	1	
6	Spacer	1	
7	Buffer	1	
8	Lower Sub Housing	1	

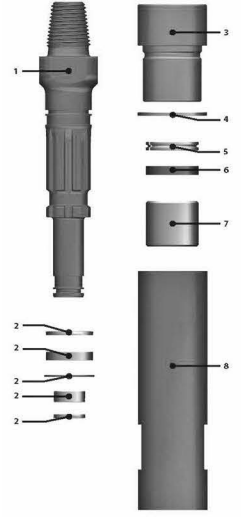
Complete Shock Absorber

*Seal kit contains Buffer

6"

Technical Specifications

Thread Connection	3 1/2" API REG PIN/BOX
Tool Length (in / mm)	21.6 / 549
OD (in / mm)	5.6 / 142
Weight (lbs / Kg)	121 / 55
Max Torque (FT-lbs / M-Kg)	4620 / 639



Parts List

NO	Part Name	Qty	Part Number
1	Splined Pin Drive Shaft	1	
2	O-Ring Sealkit	1	
3	Top Nut	1	
4	Breakout Ring	1	
5	Retainer Ring	1	
6	Spacer	1	
7	Buffer	1	
8	Lower Sub Housing	1	

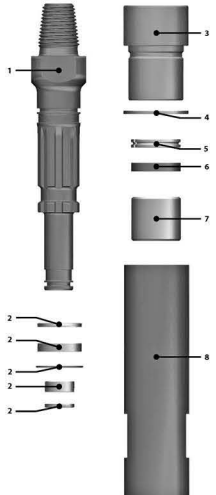
Complete Shock Absorber

*Seal kit contains Buffer

8"

Technical Specifications

Thread Connection	4 1/2" API REG PIN/BOX
Tool Length (in / mm)	25.6 / 650
OD (in / mm)	7.16 / 182
Weight (lbs / Kg)	233 / 106
Max Torque (FT-lbs / M-Kg)	9267 / 1281



Parts List

NO	Part Name	Qty	Part Number
1	Splined Pin Drive Shaft	1	
2	O-Ring Sealkit	1	
3	Top Nut	1	
4	Breakout Ring	1	
5	Retainer Ring	1	
6	Spacer	1	
7	Buffer	1	
8	Lower Sub Housing	1	

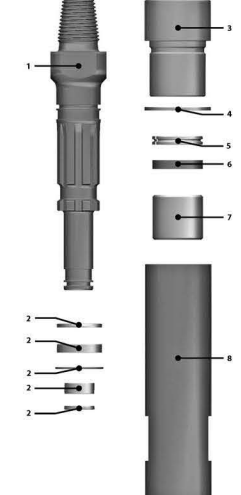
Complete Shock Absorber

*Seal kit contains Buffer

10"

Technical Specifications

Thread Connection	6 5/8" API REG PIN/BOX
Tool Length (in / mm)	27.2 / 691
OD (in / mm)	8.9 / 226
Weight (lbs / Kg)	360 / 164
Max Torque (FT-lbs / M-Kg)	25000 / 3456



Parts List

NO	Part Name	Qty	Part Number
1	Splined Pin Drive Shaft	1	
2	O-Ring Sealkit	1	
3	Top Nut	1	
4	Breakout Ring	1	
5	Retainer Ring	1	
6	Spacer	1	
7	Buffer	1	
8	Lower Sub Housing	1	

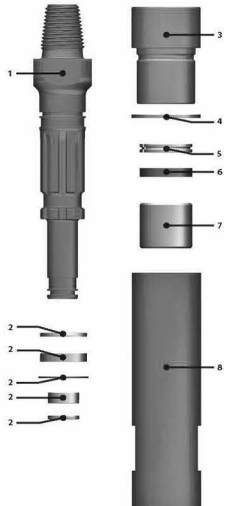
Complete Shock Absorber

*Seal kit contains Buffer

12"

Technical Specifications

Thread Connection	6 5/8" API REG PIN/BOX
Tool Length (in / mm)	29.7 / 754
OD (in / mm)	10.2 / 259
Weight (lbs / Kg)	555 / 257
Max Torque (FT-lbs / M-Kg)	116798 / 16148



Parts List

NO	Part Name	Qty	Part Number
1	Splined Pin Drive Shaft	1	
2	O-Ring Sealkit	1	
3	Top Nut	1	
4	Breakout Ring	1	
5	Retainer Ring	1	
6	Buffer	1	
7	Lower Sub Housing	1	

Complete Shock Absorber

*Seal kit contains Buffer

18"

Technical Specifications

Thread Connection	8 5/8" API REG PIN/BOX
Tool Length (in / mm)	32 / 813
OD (in / mm)	16 / 406
Weight (lbs / Kg)	1473 / 670
Max Torque (FT-lbs / M-Kg)	50000 / 6913

