

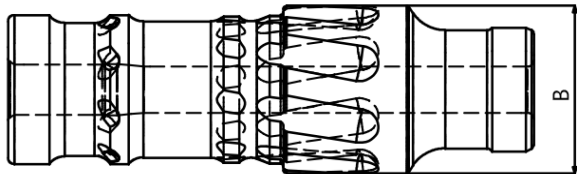
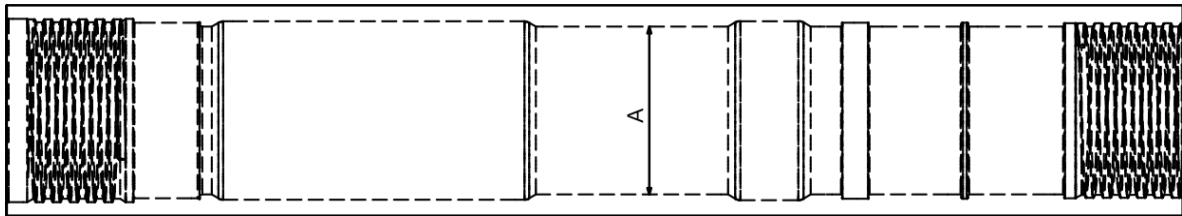
► Nova 12" Hammer N120 Service Log ◀

Hammer Service Log



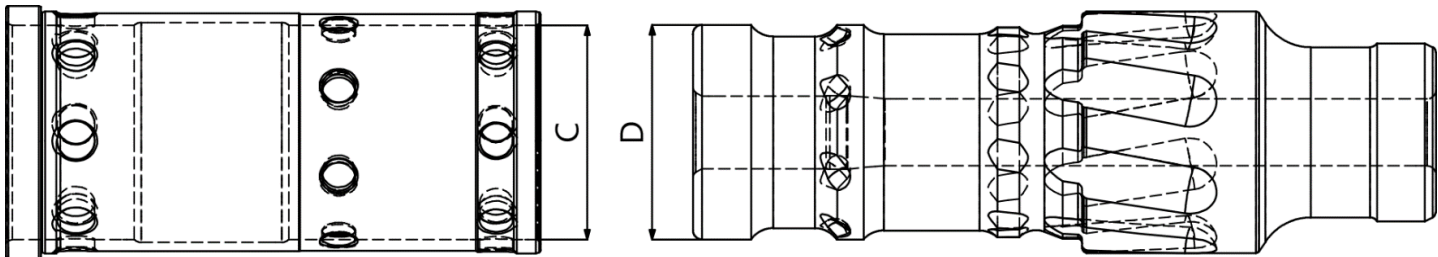
WEAR SLEEVE / PISTON CLEARANCE

Part	New Dimension		Discard Clearance
Wear Sleeve	A	8.268" (210mm)	≥0.015" (0.38mm)
Piston O.D	B	8.261" (209.84mm)	



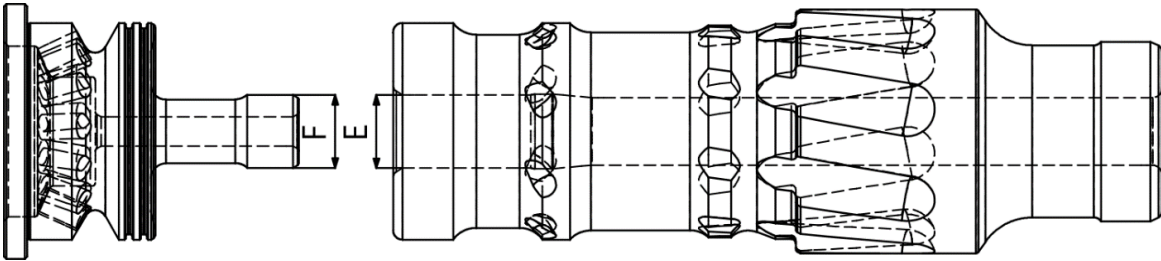
INNER CYLINDER / PISTON CLEARANCE

Cylinder I.D	C	7.342" (186.5mm)	≥0.015" (0.38mm)
Piston O.D	D	7.335" (186.33mm)	



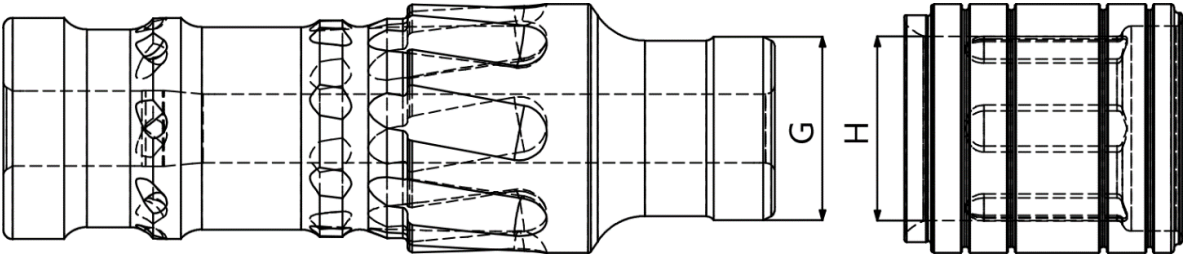
DISTRIBUTOR PROBE / PISTON ID CLEARANCE

Distributor Probe O.D	F	2.47" (62.75mm)	≥0.015" (0.38mm)
Piston I.D	E	2.48" (63.0mm)	



Bearing / PISTON OD CLEARANCE

Bearing I.D	H	6.102" (155.0mm)	≥0.015" (0.38mm)
Piston O.D	G	6.086" (154.6mm)	



note.

1. Chuck should be replaced when wear transfers to wear sleeve.